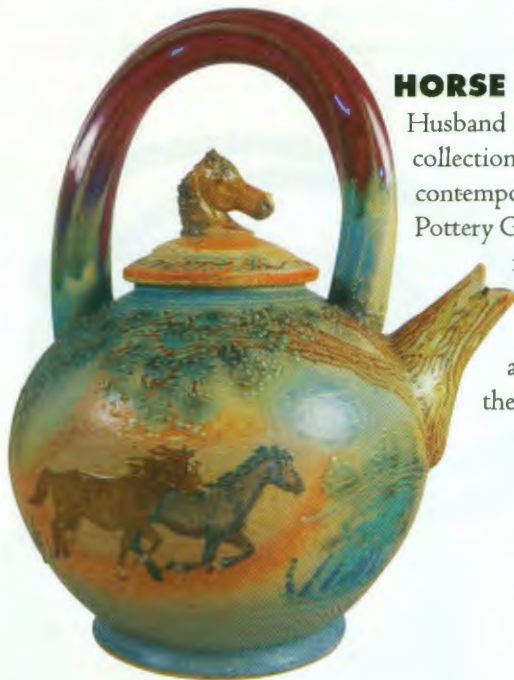




PHOTO © BOB WADE.COM



HORSE AND TREES TEAPOT

Husband and wife Tony and Mindy Winchester have proven a dynamic duo with their collection of artisan Winchester Pottery. While also producing a separate line of his own contemporary designs, Tony—a studio potter and three-time grand champion of the U.S. Pottery Games—most enjoys collaborating with his equine-artist wife, throwing the pottery for her to then decorate with detailed images of horses and Western landscapes.

The Horse and Trees teapot, like this one boasting a pair of equines galloping in an open mountain field, is one of their signature styles. The spout is designed as an old oak tree with its branches climbing up the pot and onto the handle, shading the wild ponies beneath (\$150). www.etsy.com/shop/winchesterpottery

ROCKIES CHAIR

In the Rocky Mountains of Colorado, Scenic Mesa Ranch began as a place for native buffalo to roam. Over time the ranch developed a bison meat business. To make use of the available hides, leather furniture was crafted for the property, proving durable enough to withstand constant use by cowboys and hunters; in time, a commercial line emerged. The Buffalo Collection at Scenic Mesa was born, decorating its fellow ranches, lodges, and Western homes in high-end artisan furnishings upholstered with the hides of its herd. Now the ranch is introducing the Colorado line, a more affordable collection of American buffalo leather furnishings scaled to standard room sizes that includes designs like the simple yet striking upholstered armchair in blue (\$2,362). 970.872.3548, www.scenicmesa.com

